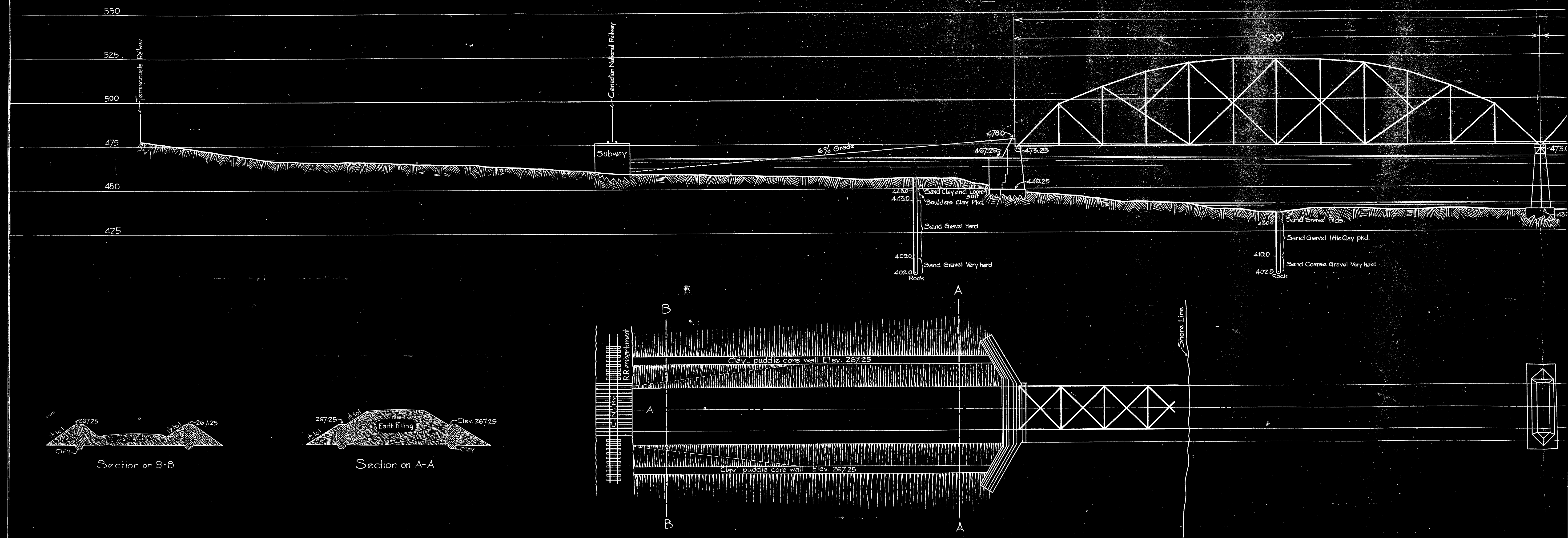


Department  
**INTERNATIONAL**  
**EDMUNDSTON**

PROFILE, BORINGS

Scale: { Horizontal - 25ft = 1 inch  
 Vertical - 25ft = 1 inch





Department of Public Works, Canada.

# INTERNATIONAL BRIDGE

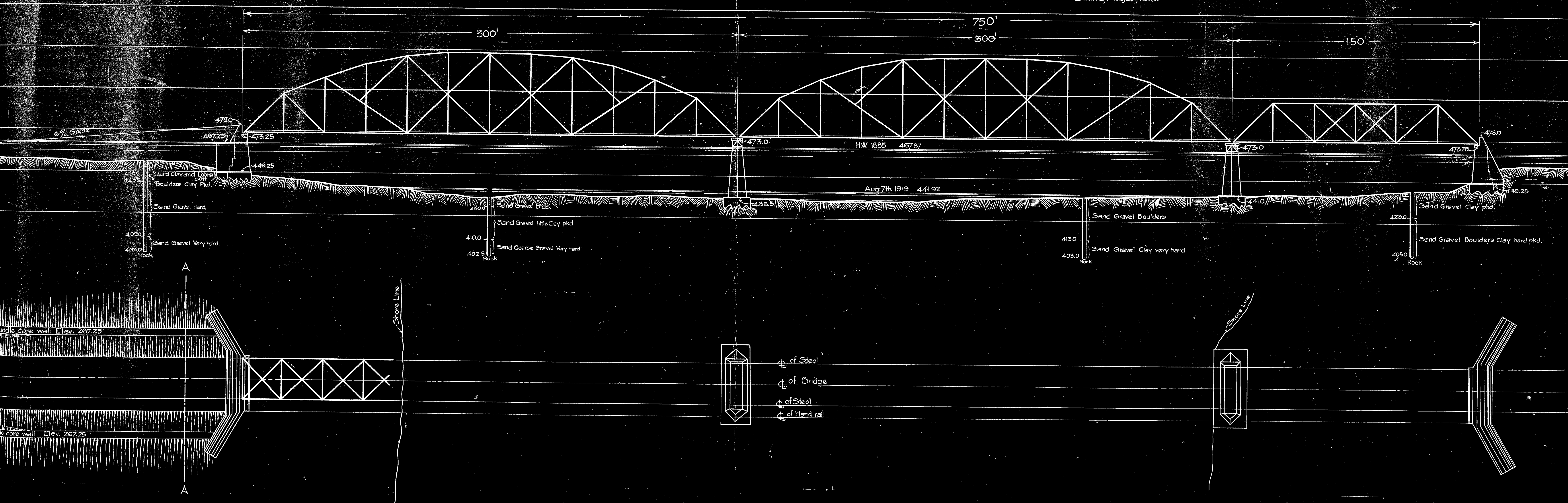
## EDMUNDSTON N.B. - MADAWASKA, Me.

SHOWING

PROFILE, BORINGS AND PLAN OF PROPOSED FERRY SITE A-A

Scale: { Horizontal - 25 ft = 1 inch  
Vertical - 25 ft = 1 inch

J.C. Stewart, A.M.E.I.C.  
Ottawa, August, 1919.

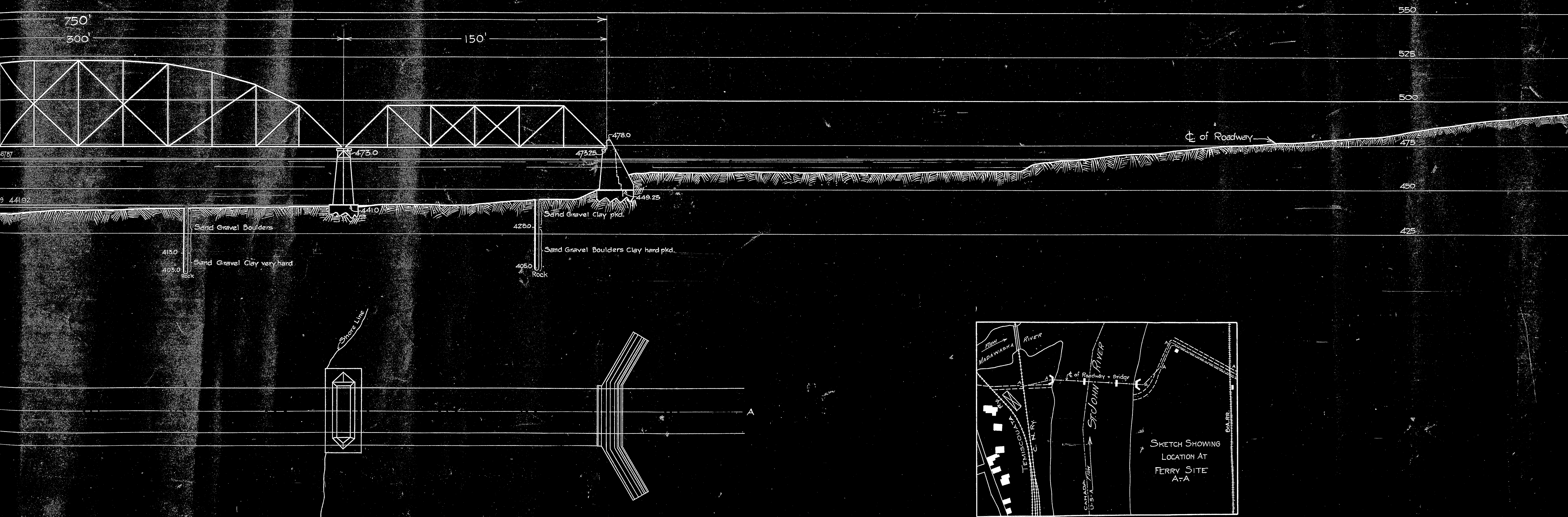




# BRIDGE

## MAJAWASKA, Me.

J.C. Stewart, A.M.E.I.C.  
Ottawa, August, 1919.





Department of Public Works, Canada.

# INTERNATIONAL BRIDGE

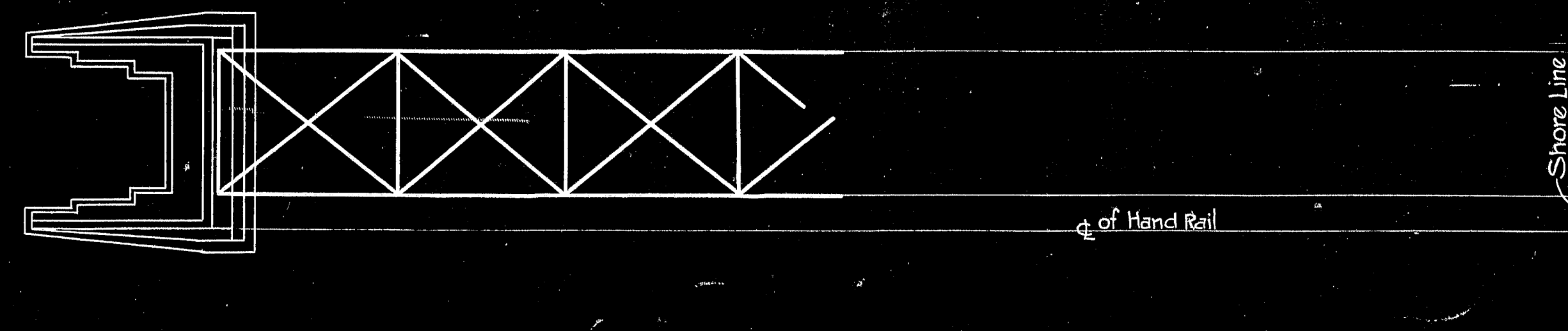
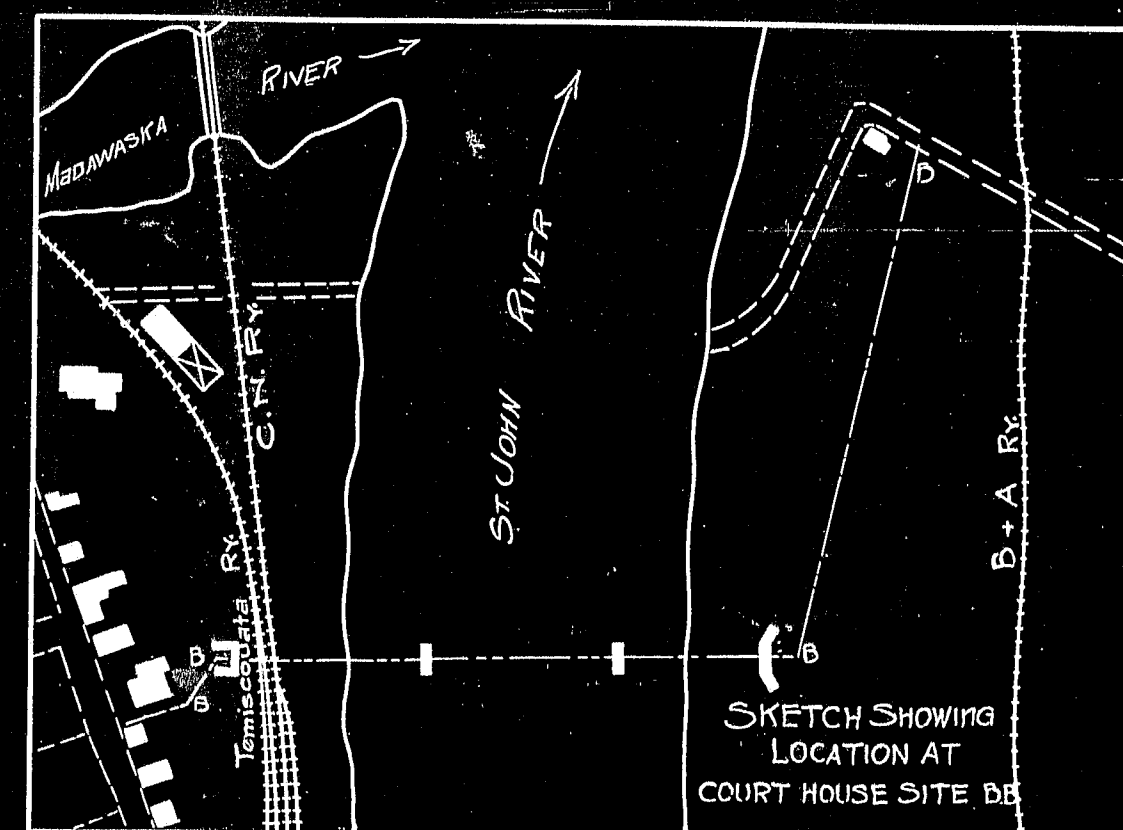
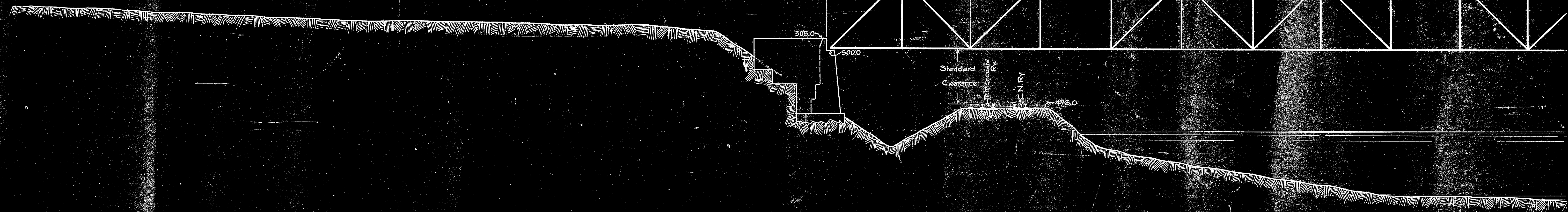
## EDMUNDSTON N.B. - MADAWASKA, ME.

SHOWING

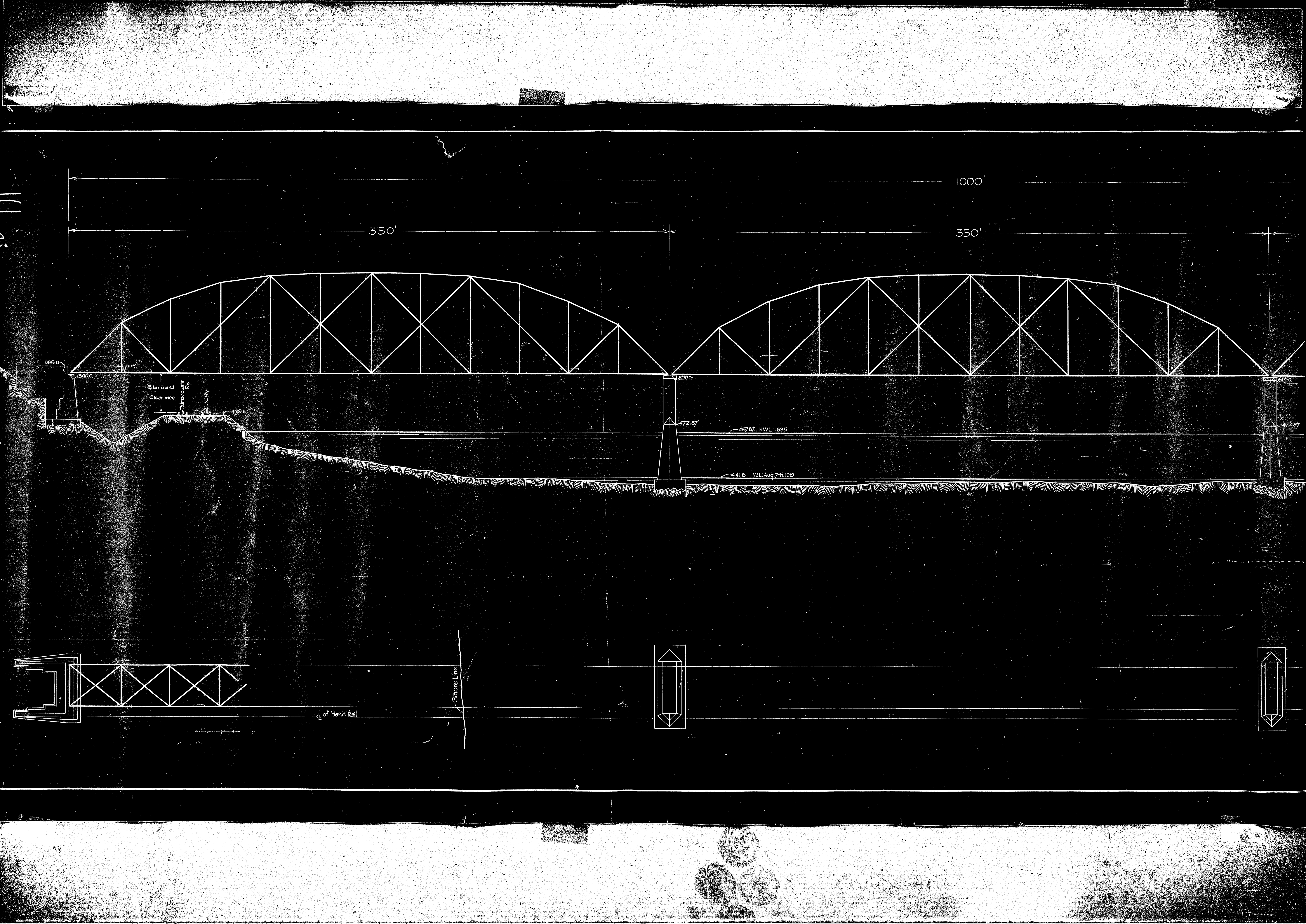
PROFILE AND PLAN OF PROPOSED COURT HOUSE SITE B-B

Scale: { Horizontal 20f = 1inch  
Vertical 20f = 1inch

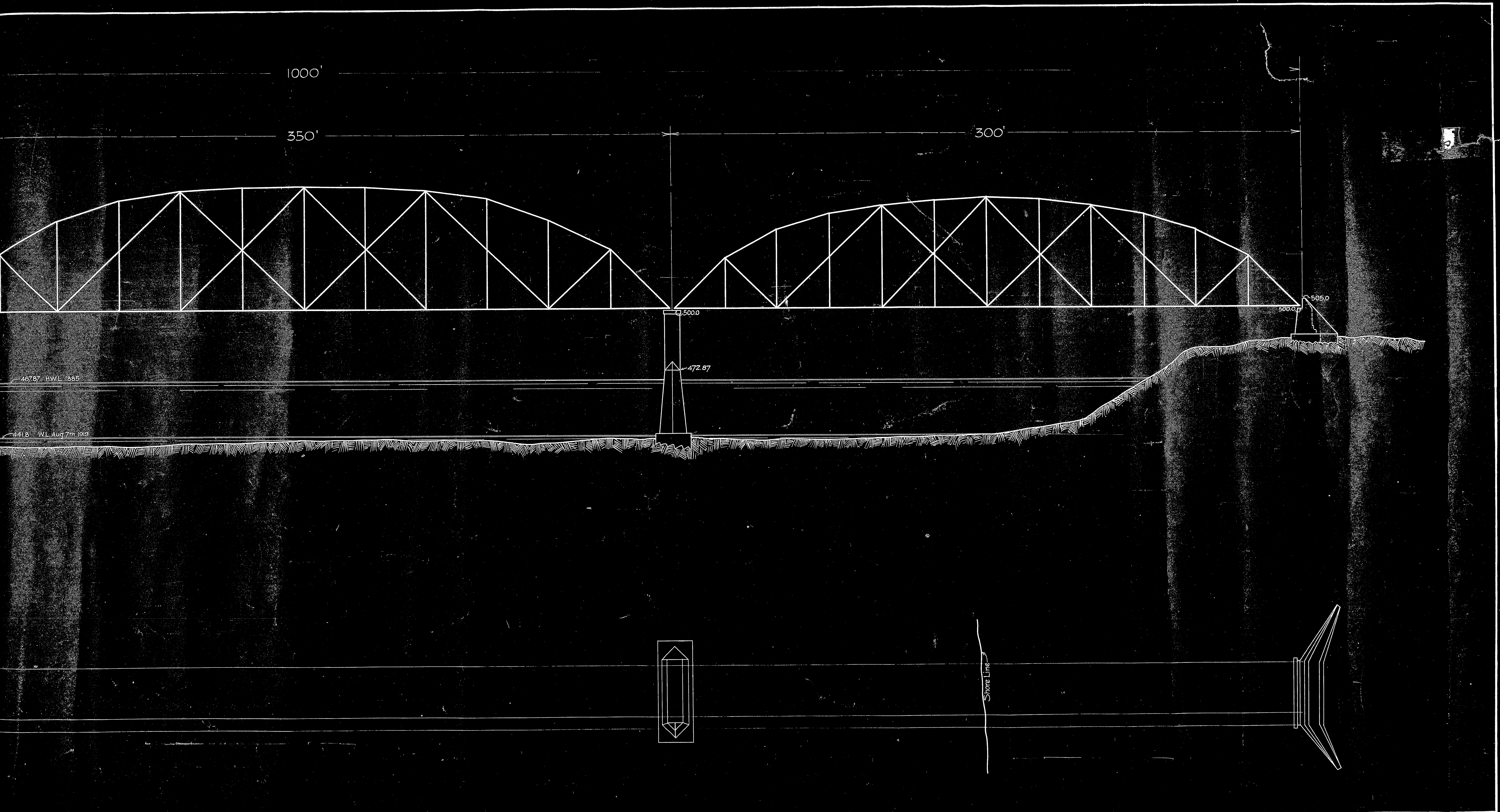
J.C. Stewart, A.M.E.I.C.  
Ottawa, August, 1919.



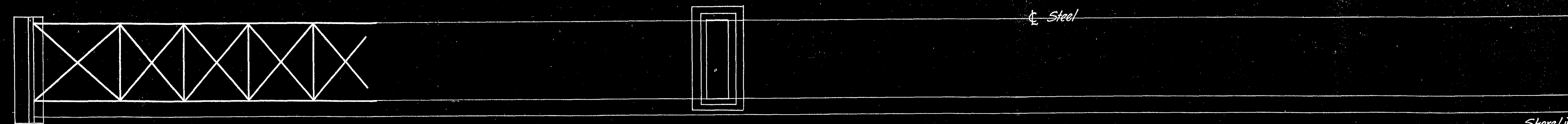
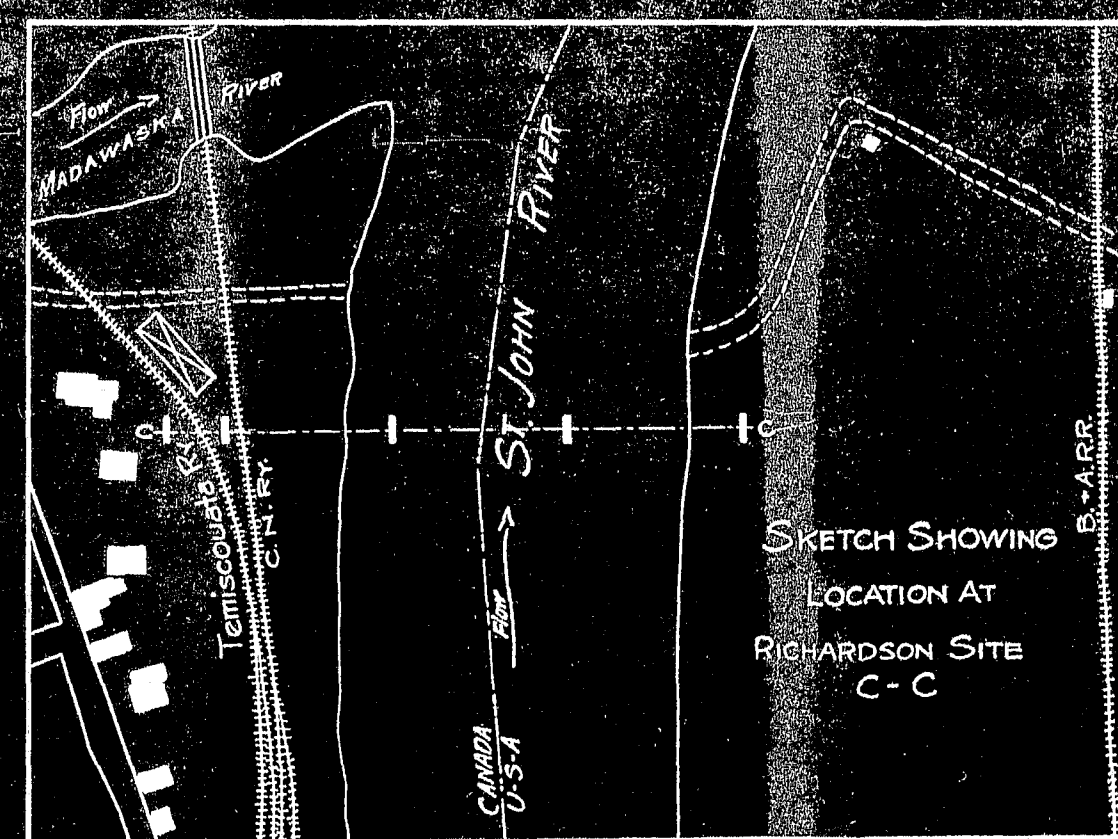
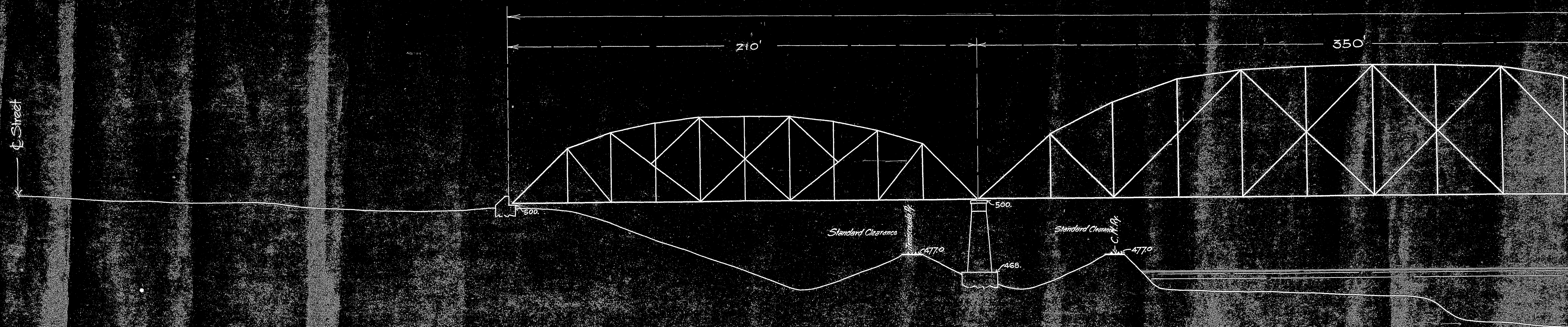




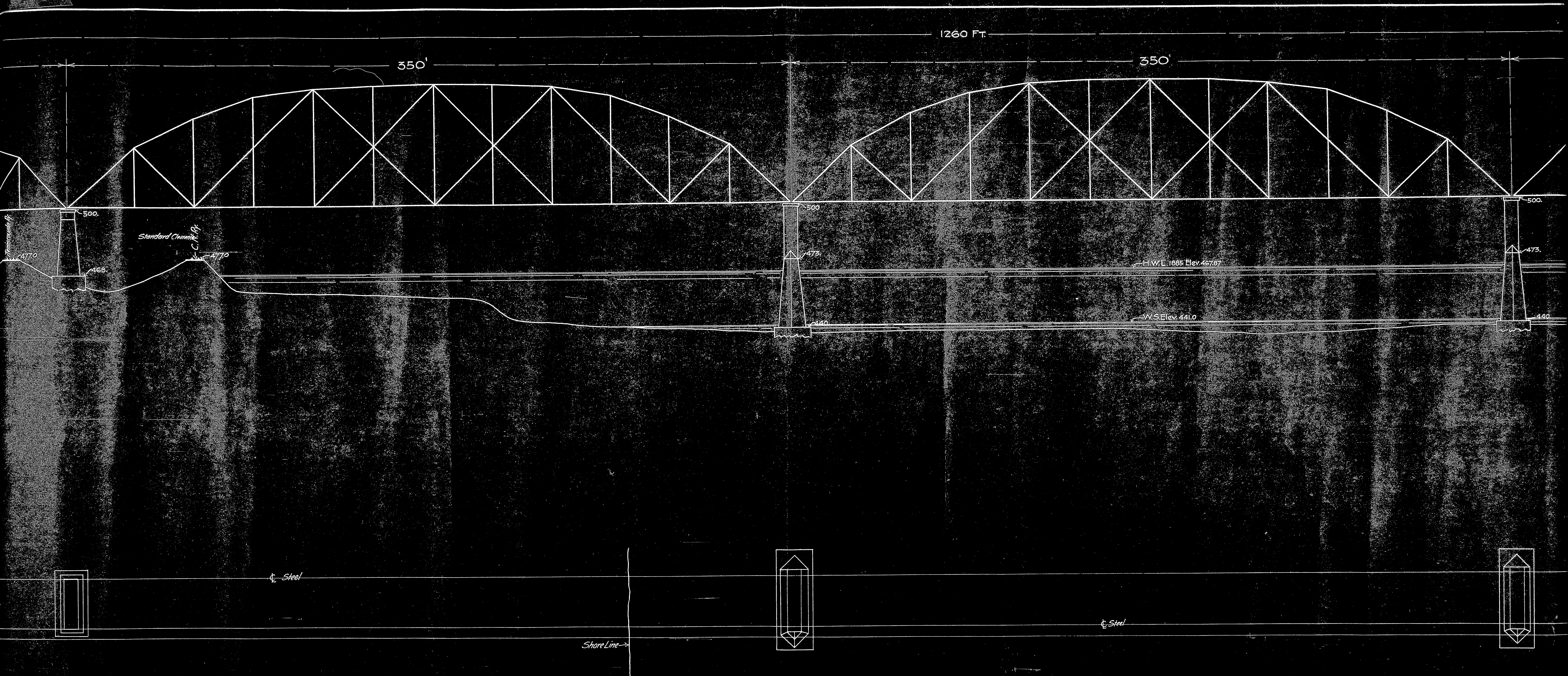




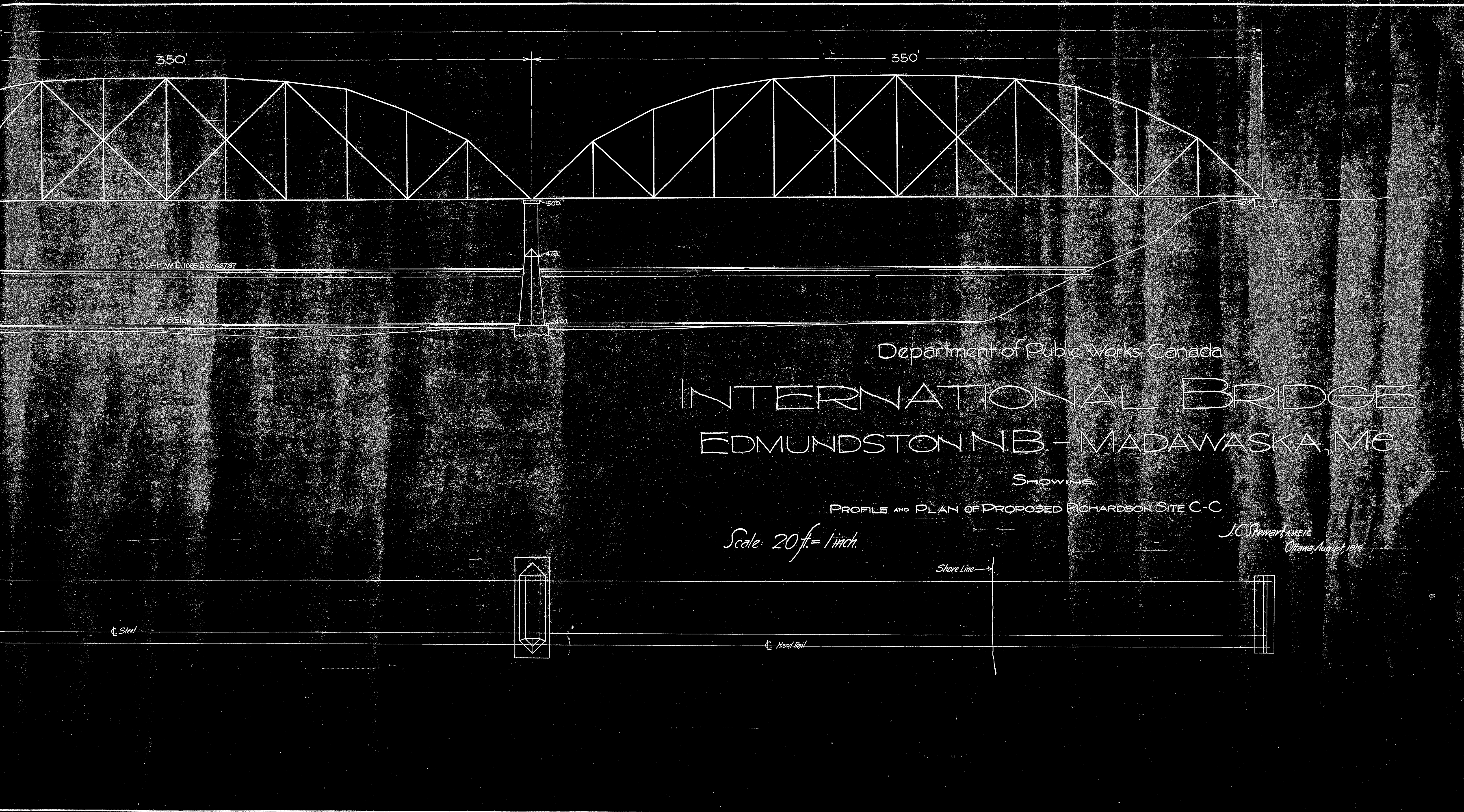




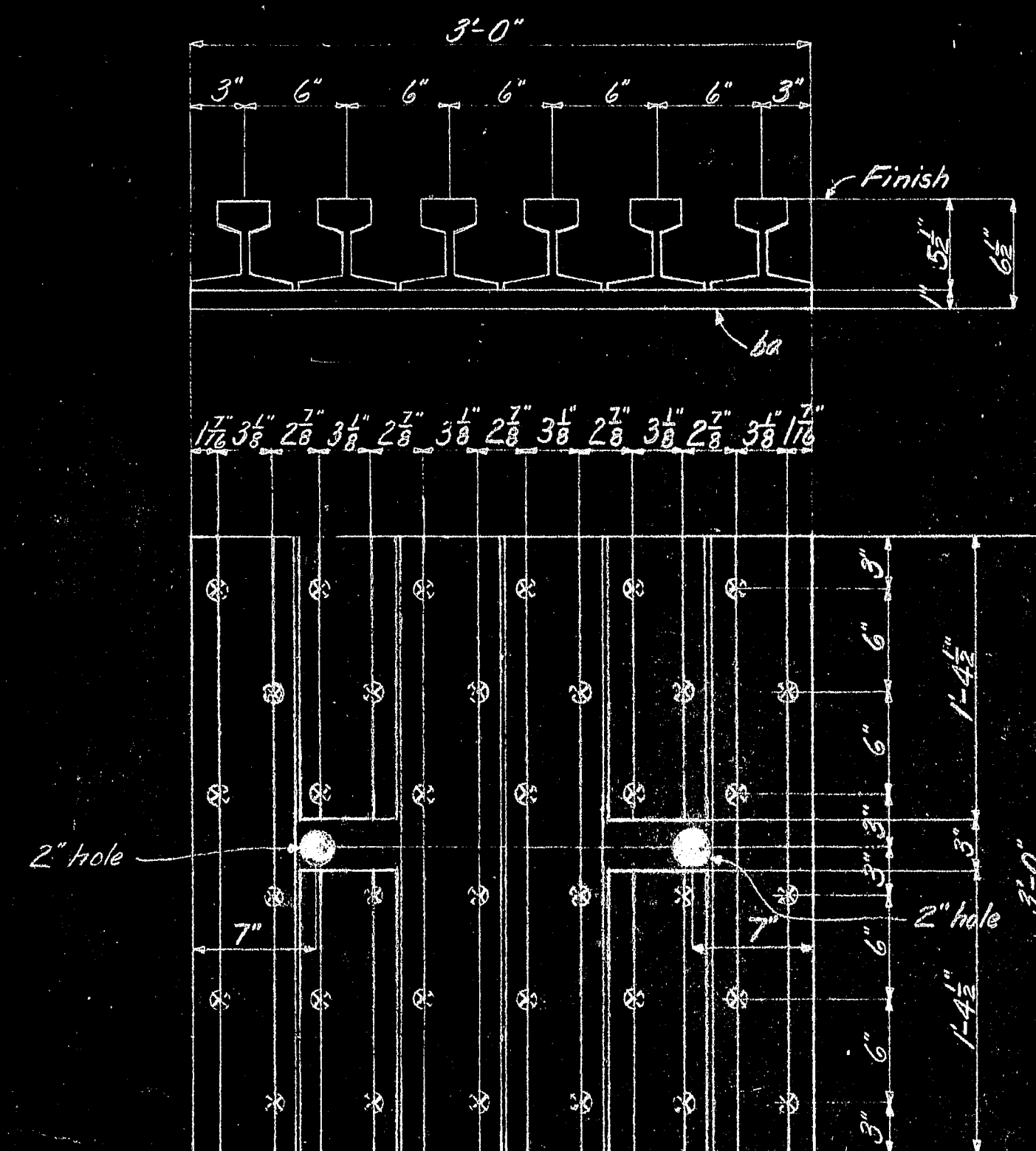






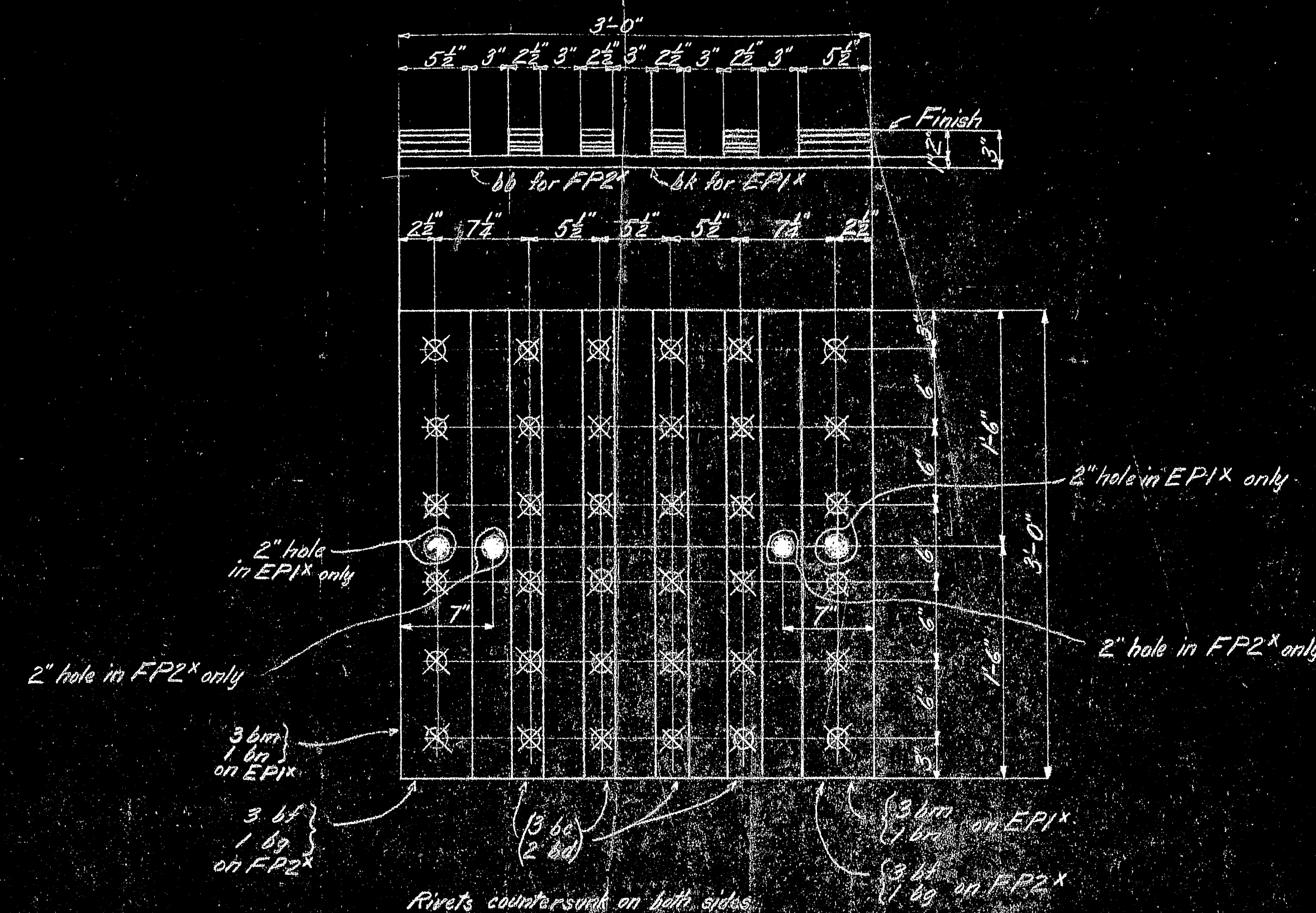






Rivets countersunk on lower side

2- PEDESTALS - EPIX  
for Canadian Abutment



2- PEDESTALS - EPIX  
2- PEDESTALS - FP2X

LINE NO.	MEMBER			MATERIAL			REMARKS	ORDERED				SHIPMENTS	
	No. P.Cs.	NAME	MARK	SHAPE	LENGTH			No. P.Cs.	LENGTH	ITEM	STOCK	No. P.Cs.	SCALE
1	2	Pedestals	EPIX	2 Pcs 1/2 3/4	1	3 0		1	33 0	13			
2				3 bars 1/2 3/4	3	0		1	33 0	13			
3				8 bars 1/2 3/4	1	4 1/2		1	5 0	2686			
4													
5	2	Pedestals	FP2X	2 Pcs 1/2 3/4	1	3 0							
6				48 bars 1/2 3/4	3	0							
7				32 bars 1/2 3/4	3	0							
8				12 bars 1/2 3/4	3	0							
9				4 bars 1/2 3/4	3	0							
10													
11													
12	2	Pedestals	EPIX	2 Pcs 1/2 3/4	1	3 0							
13				24 bars 1/2 3/4	3	0							
14				16 bars 1/2 3/4	3	0							
15				12 bars 1/2 3/4	3	0							
16				4 bars 1/2 3/4	3	0							
17													
18													
19													
20													
21													
22													
23													
24													
25													
26													
27													
28													
29													
30													

NAME OF STRUCTURE Pedestal Shear for Fairview Station-Madawaska Bridge



RIVETS HOLES	NOTES	REVISED	CUSTOMER
			STATE OF MAINE 9. DOMINION OF CANADA.
			NAME OF STRUCTURE
			INTERNATIONAL BRIDGE over ST JOHN RIVER between
			LOCATION
			MAIRASKA ME. & EDMUNDSTON N.B.
			TITLE OF DRAWING
			MARKING DIAGRAM
LAST ASSEMBLY MARKS			<b>THE CANADIAN BRIDGE CO., LIMITED</b> WALKERVILLE, ONT.
PAIN			SCALE: $\frac{3}{32}'' = 1'0''$
			MADE BY <i>CWS</i> STARTED..... COMPLETED <i>Aug 92</i>
			CHECKED BY <i>RW</i> ..... AUG 92 COUNT NO. <i>2411</i>
			APPROVED BY..... DATE..... DRG. NO. <i>2</i>



8 PEDESTALS - FPI

**SECTION AA**

2 ft 24"  $\times \frac{3}{4}$ " 2'-3" (av) pa B37'-9" Fin. at bottom  
 2 ft 13'  $\times \frac{3}{4}$ " 2'-2" (av) pb B36'-2" Fit " "  
 1 ft 11"  $\times \frac{1}{2}$ " 1'-4" pc B36'-0"  
 2 " 11"  $\times \frac{1}{2}$ " 1'-6"  $\frac{3}{4}$ " pd B25'-8"  $\frac{1}{2}$ " Fin. at bottom  
 4 L 4'  $\times$  4"  $\times \frac{1}{2}$ " 1'-3" sa B50'-0"  
 4 " do  $\times$  1'-6" sb }  
 2 " 6'  $\times$  6"  $\times \frac{3}{4}$ "  $\times$  3'-0" ac } B48'-0"  $\frac{1}{2}$ "  
 2 " do  $\times$  3'-0" ad }  
 1 Base ft 36'  $\frac{1}{2}$ "  $\times$  3'-0" ba B3'-0"

8 PEDESTALS - EPI

**SECTION B-B**

$2 R^s$   $18 \times \frac{3}{4}$   $2'-4"$  (av) pf  $B$   $30'4"$  Fin at Bottom  
 $2 R^s$   $7\frac{1}{2} \times \frac{3}{4}$   $2'-3"$  (av) pg  $B$   $18'4"$  Fit at "  
 $2 R^s$   $11 \times \frac{1}{2}$   $1'-0\frac{3}{4}$  ph  $B$   $36'-0"$  "  
 $1 R$   $11 \times \frac{1}{2}$   $1'-0\frac{3}{4}$  ph } Fin. at bottom  
 $4 L^s$   $4 \times 4 \times \frac{1}{2}$   $1'-0\frac{3}{4}$  sc }  $B$   $60'-0"$   
 $4 L^s$   $4 \times 4 \times \frac{1}{2}$   $11\frac{1}{4}$  sd }  
 $4 L^s$  ac  
 $1 R$   $36 \times \frac{1}{2}$   $3'-0"$  b b  $B$   $36'-\frac{1}{8}"$   $3'-0"$   
 $1 Bar$   $2\frac{1}{2} \times \frac{3}{4}$   $3'-0"$  pm  $B$   $2\frac{1}{2} \times \frac{3}{4}$   $24'-1"$

[illegible]

16 PINS REQ'd (called for on shop summary)  
Note-Pin nuts to be ordered from Std Cstg Bill.

Diagram illustrating a bolted connection. The bolt is labeled  $\frac{1}{2}$ " and the nut is labeled  $\frac{5}{8}$ " nut. The washer is labeled  $4 \times 4 \times \frac{1}{2}$  Washer. The bolt length is indicated as  $2'-0"$  and the beam length is also  $2'-0"$ . The distance from the end of the beam to the nut is  $3"$ .

16 ANCHOR BOLTS REQ'd  
Called for on Shop Summary

Hand-drawn diagram of a bolted joint. The diagram shows a rectangular plate with a width of 2 inches and a height of 3 inches. A bolt is shown passing through the plate, secured with a nut and washer on both the left and right sides. The bolt is labeled "8 x 1/2 Washer". The distance between the centers of the two bolts is 2 inches. The bolt is labeled "2 Bolt 1/2 x 2-6 B7Z4". The nut and washer on the left are labeled "5a nut".

16 ANCHOR BOLTS REQ'd  
Called for on Shop Summary

~~Called for on Shop Summary~~

Hand-drawn technical drawing of a rectangular plate. The overall dimensions are 3'-0" in width and 2'-6" in height. The width is divided into sections of 1'-5 1/2" and 1'-5 1/2". The height is divided into sections of 1'-5 1/2" and 1'-5 1/2". The drawing shows a grid of vertical lines with dimensions 1/2", 5", 5", 3", 3 1/2", 3 1/2", 3", 5", 5", and 1/2" from left to right. A horizontal line is drawn across the middle, with a note "2" Hole" and a dimension of 1'-5 1/2" from the top edge. The bottom edge has a note "1' 5 1/2" pm" and a "Finish" label with an arrow pointing to the right edge. There are two circular holes, one near the top center and one near the bottom center.

[illegible]

MATERIAL FOR 1 ROLLER NEST

6 Rollers  $4\frac{1}{2}'' \times 2-2\frac{1}{2}''$  B  $4\frac{3}{4}'' \times 17-10\frac{1}{2}''$   
2 Bars  $4\frac{3}{8}'' \times \frac{3}{4}'' \times 2-10\frac{1}{2}''$  pn B  $4\frac{1}{2}'' \times \frac{3}{4}'' \times 23-1''$   
2 " do  $\times 2-0''$  pp B  $4\frac{1}{2}'' \times \frac{3}{4}'' \times 16-1''$   
4 L's  $3\frac{1}{2}'' \times 2\frac{1}{2}'' \times \frac{3}{8}'' \times 4\frac{3}{8}''$  ah B  $12-0''$

Diagram of a roof structure showing dimensions and labels:

- Top label: 2 of Bottom Chord
- Roof slope: 1:1
- Roof height: 14' 6"
- Roof width: 24' 0"
- Roof label: EPI.
- Roof base: 4' 6"
- Roof base label: RNI
- Roof base label: BPI

ASSEMBLED VIEW EXPANSION END

NOTES  
RIVETS  $\frac{7}{8}$ " except as noted in RNI  
HOLES Punch holes  $\frac{11}{16}$ "  $\phi$  & ream  
to  $\frac{11}{16}$ " except in RNI which  
punch  $\frac{11}{16}$  for  $\frac{3}{8}$ " rivets and  
 $\frac{9}{16}$  for  $\frac{1}{2}$ " bolts

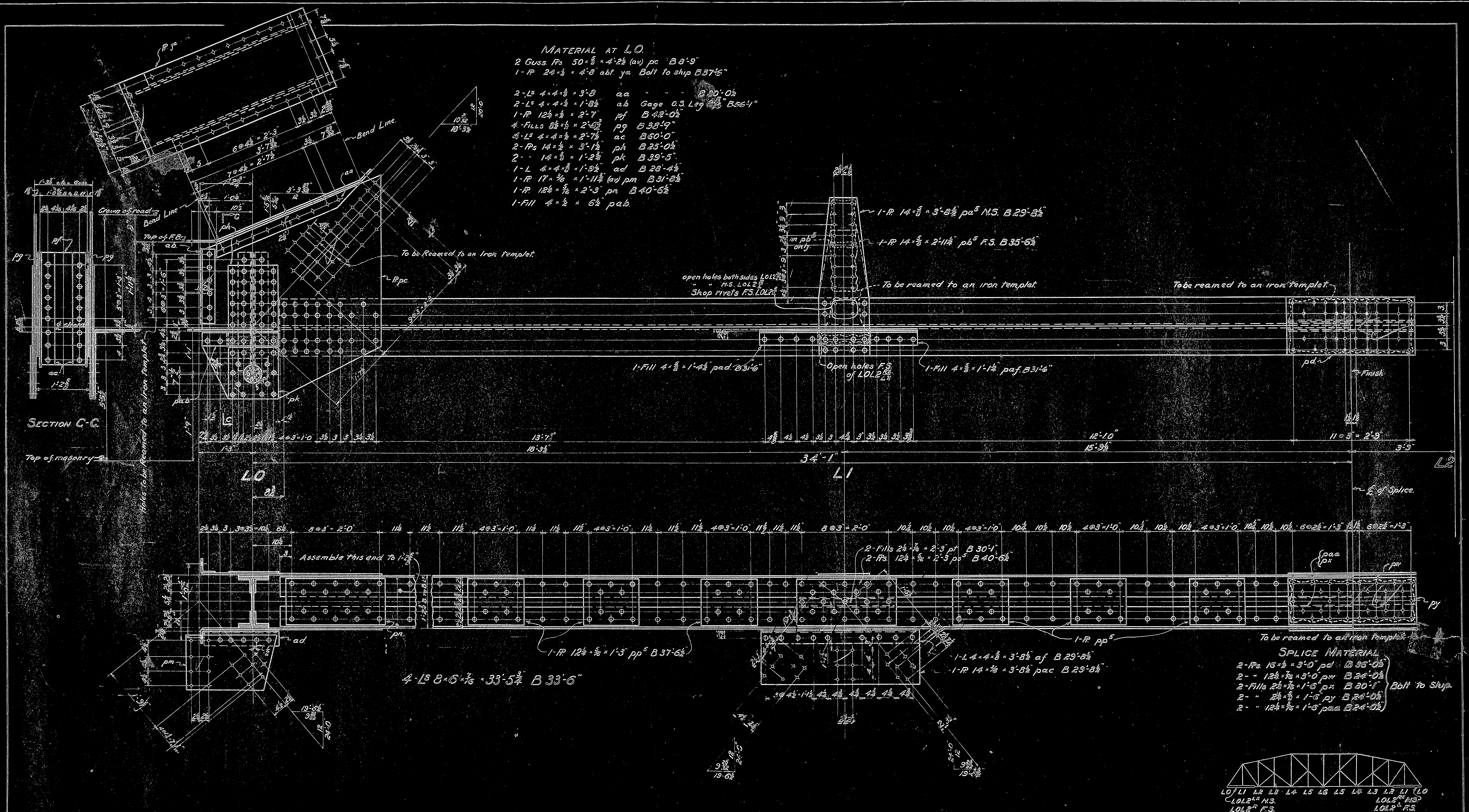
PAINT See drwg #1

REVISED	CUSTOMER	STATE OF MAINE - DOMINION OF CANADA	
	NAME OF STRUCTURE	INTERNATIONAL BRIDGE OVER THE	
	LOCATION	ST. JOHN RIVER MADAWASKA ME & EDMUNDSTON	
	TITLE OF DRAWING	PIER MEMBERS PINS ANCHORS ETC	
LAST ASSEMBLY MARKS	<p><b>THE CANADIAN BRIDGE CO., LIMITED</b></p> <p>WALKERVILLE, ONT.</p>		
PP	SCALE	1" = 1'-0"	
ah	MADE BY	R.W.	STARTED
sd			June 22-21
bb	CHECKED BY	C.W.	Aug 12-21
	APPROVED BY		DATE
			DRG. NO. 3





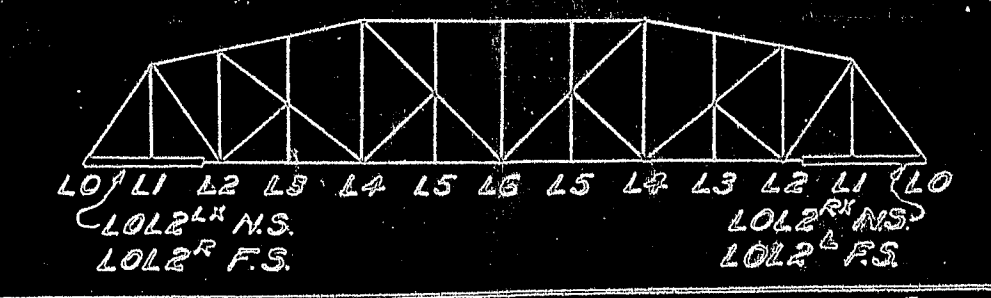




**MATERIAL AT L0**  
 2 Guss. Ps 50<sup>+</sup> x 4<sup>1</sup>/<sub>2</sub> (av) pc B 36<sup>+</sup> 9"  
 1-R 24<sup>1</sup>/<sub>2</sub> x 4<sup>1</sup>/<sub>2</sub> abt ya Bolt to ship B 37<sup>1</sup>/<sub>2</sub>"  
 2-L 4<sup>1</sup>/<sub>2</sub> x 3<sup>1</sup>/<sub>2</sub> aa B 30<sup>+</sup> 0<sup>1</sup>/<sub>2</sub>"  
 2-L 4<sup>1</sup>/<sub>2</sub> x 1<sup>1</sup>/<sub>2</sub> ab Gage 0.5 Leg B 56<sup>+</sup> 4"  
 1-R 12<sup>1</sup>/<sub>2</sub> x 2<sup>1</sup>/<sub>2</sub> pf B 42<sup>+</sup> 0<sup>1</sup>/<sub>2</sub>"  
 4-Fills 8<sup>1</sup>/<sub>2</sub> x 2<sup>1</sup>/<sub>2</sub> pg B 35<sup>+</sup> 9"  
 2-L 4<sup>1</sup>/<sub>2</sub> x 2<sup>1</sup>/<sub>2</sub> ac B 50<sup>+</sup> 0<sup>1</sup>/<sub>2</sub>"  
 2-Rs 14<sup>1</sup>/<sub>2</sub> x 3<sup>1</sup>/<sub>2</sub> ph B 25<sup>+</sup> 0<sup>1</sup>/<sub>2</sub>"  
 2- " 14<sup>1</sup>/<sub>2</sub> x 1<sup>1</sup>/<sub>2</sub> pk B 39<sup>+</sup> 5"  
 1-L 4<sup>1</sup>/<sub>2</sub> x 1<sup>1</sup>/<sub>2</sub> ad B 28<sup>+</sup> 4<sup>1</sup>/<sub>2</sub>"  
 1-R 17<sup>1</sup>/<sub>2</sub> x 1<sup>1</sup>/<sub>2</sub> av pm B 31<sup>+</sup> 3<sup>1</sup>/<sub>2</sub>"  
 1-R 12<sup>1</sup>/<sub>2</sub> x 2<sup>1</sup>/<sub>2</sub> pn B 40<sup>+</sup> 6<sup>1</sup>/<sub>2</sub>"  
 1-Fill 4<sup>1</sup>/<sub>2</sub> x 6<sup>1</sup>/<sub>2</sub> pal

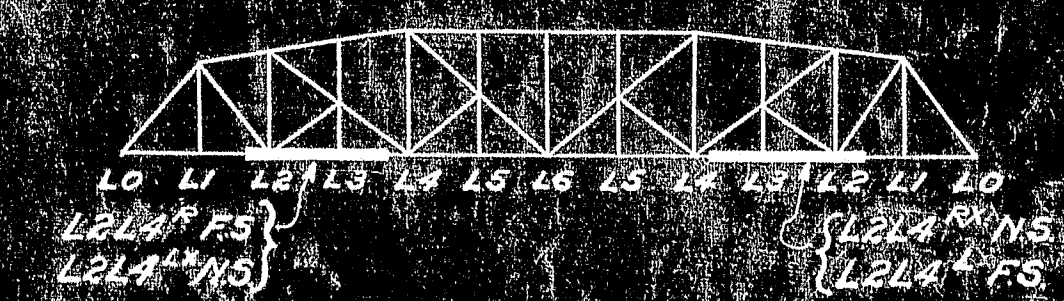
**SPLICE MATERIAL**  
 2-Rs 15<sup>1</sup>/<sub>2</sub> x 3<sup>1</sup>/<sub>2</sub> pd B 35<sup>+</sup> 0<sup>1</sup>/<sub>2</sub>"  
 2- " 12<sup>1</sup>/<sub>2</sub> x 3<sup>1</sup>/<sub>2</sub> pm B 24<sup>+</sup> 0<sup>1</sup>/<sub>2</sub>"  
 2-Fills 2<sup>1</sup>/<sub>2</sub> x 1<sup>1</sup>/<sub>2</sub> pa B 30<sup>+</sup> 1"  
 2- " 2<sup>1</sup>/<sub>2</sub> x 1<sup>1</sup>/<sub>2</sub> py B 24<sup>+</sup> 0<sup>1</sup>/<sub>2</sub>"  
 2- " 12<sup>1</sup>/<sub>2</sub> x 1<sup>1</sup>/<sub>2</sub> pac B 24<sup>+</sup> 0<sup>1</sup>/<sub>2</sub>"

4 BOTTOM CHORDS REQ'D  
 4 " " " " L0L2<sup>R</sup> RIGHT AS SHOWN  
 4 " " " " L0L2<sup>L</sup> LEFT OF L0L1<sup>R</sup>  
 4 " " " " L0L2<sup>RX</sup> RIGHT AS SHOWN } SAME AS L0L2<sup>R</sup>  
 4 " " " " L0L2<sup>LX</sup> LEFT OF L0L1<sup>RX</sup> } EXCEPT OPEN HOLES AT L1



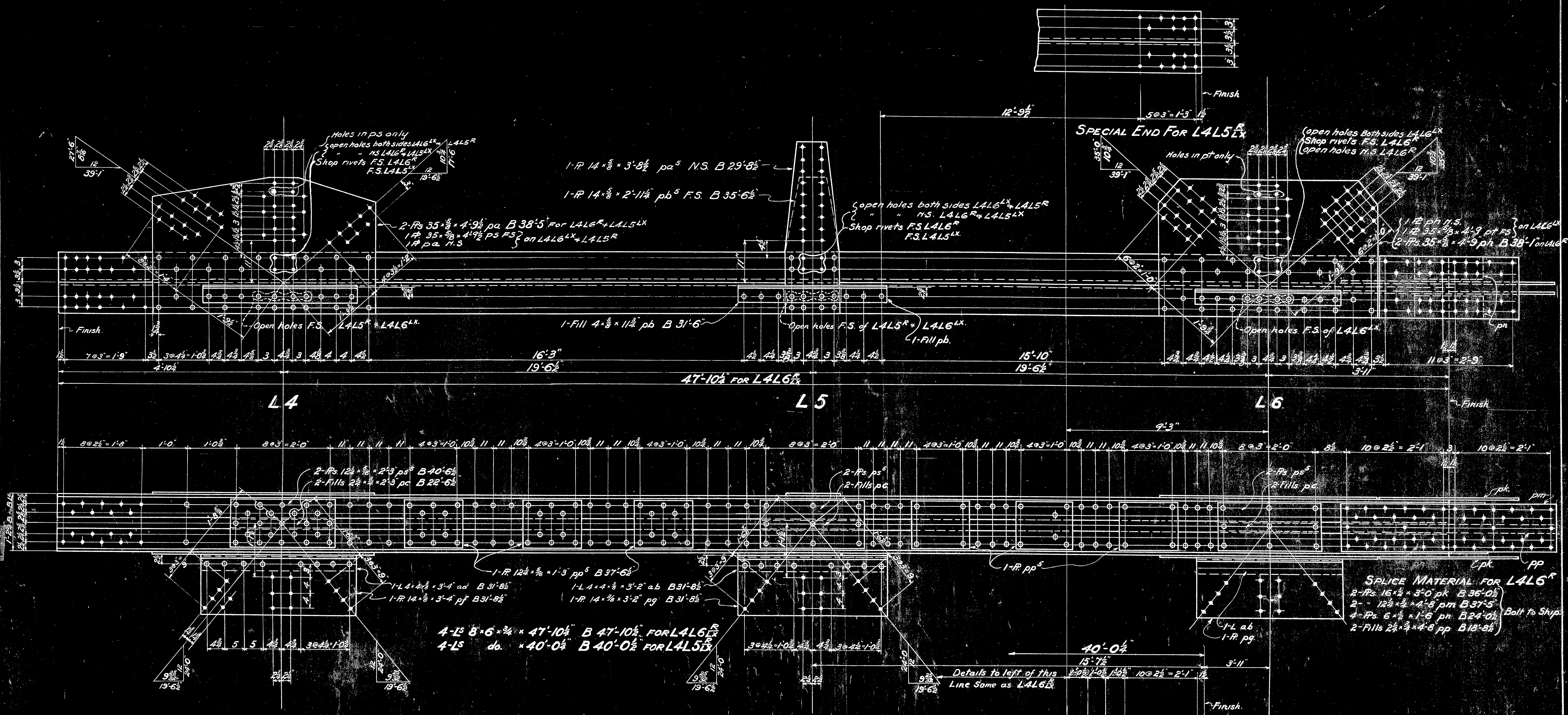
RIVETS 5/8" HOLES 3/4" Punch holes 1/8" to 1/4" except L <sup>1</sup> ad. of R <sup>1</sup> pm. pn, pp <sup>1</sup> , pac = as per R <sup>1</sup> ya-laa whelpunch 1/8"		NOTES To be reamed to an iron template. Shop rivets F.S. L0L2 <sup>R</sup>	REVISED af pc ya	CUSTOMER STATE OF MAINE - DOM. OF CANADA NAME OF STRUCTURE INTERNATIONAL BRIDGE over the St. John LOCATION RIVER BETWEEN MADAWASKA, ME. & EDMONSTON, NB TITLE OF DRAWING BOTTOM CHORDS L0L1 <sup>R</sup> & L0L1 <sup>L</sup> THE CANADIAN BRIDGE CO., LIMITED WALKERVILLE, ONT. SCALE 1-1/2" MADE BY R.W. STARTED JUNE 17, 1920, COMPLETED JUNE 20, 1921 CHECKED BY C.W.D. Aug 7/21. CONT. NO. 2211 APPROVED BY DATE DRG. NO. 5
---	--	--	---------------------------	--





NOTES RIVETS 3/4" HOLES 1 1/8" Punch holes 1/4" ream to 1/8" except in L242, ab + 1/2" pad of 1/4" pp. which punch 1/8" Ream all open holes to an 1/16" taper except Lateral Plates. PAINT: See Drg #1		REVISED LAST ASSEMBLY MARK ab ps	CUSTOMER STATE OF MAINE - DOM. OF CANADA NAME OF STRUCTURE INTERNATIONAL BRIDGE over the St. John LOCATION RIVER between MADAWASKA, ME + EDMONDSTON, NB TITLE OF DRAWING BOTTOM CHORD L214 THE CANADIAN BRIDGE CO., LIMITED WALKERVILLE, ONT. SCALE: 1" = 1'-0" MADE BY R.W. ORDERED BY C. 2/1/34 2/11/34 APPROVED BY R.W. DATE 2/11/34 Dwg. No. 2411 Date Recd. 6
--	--	--	---



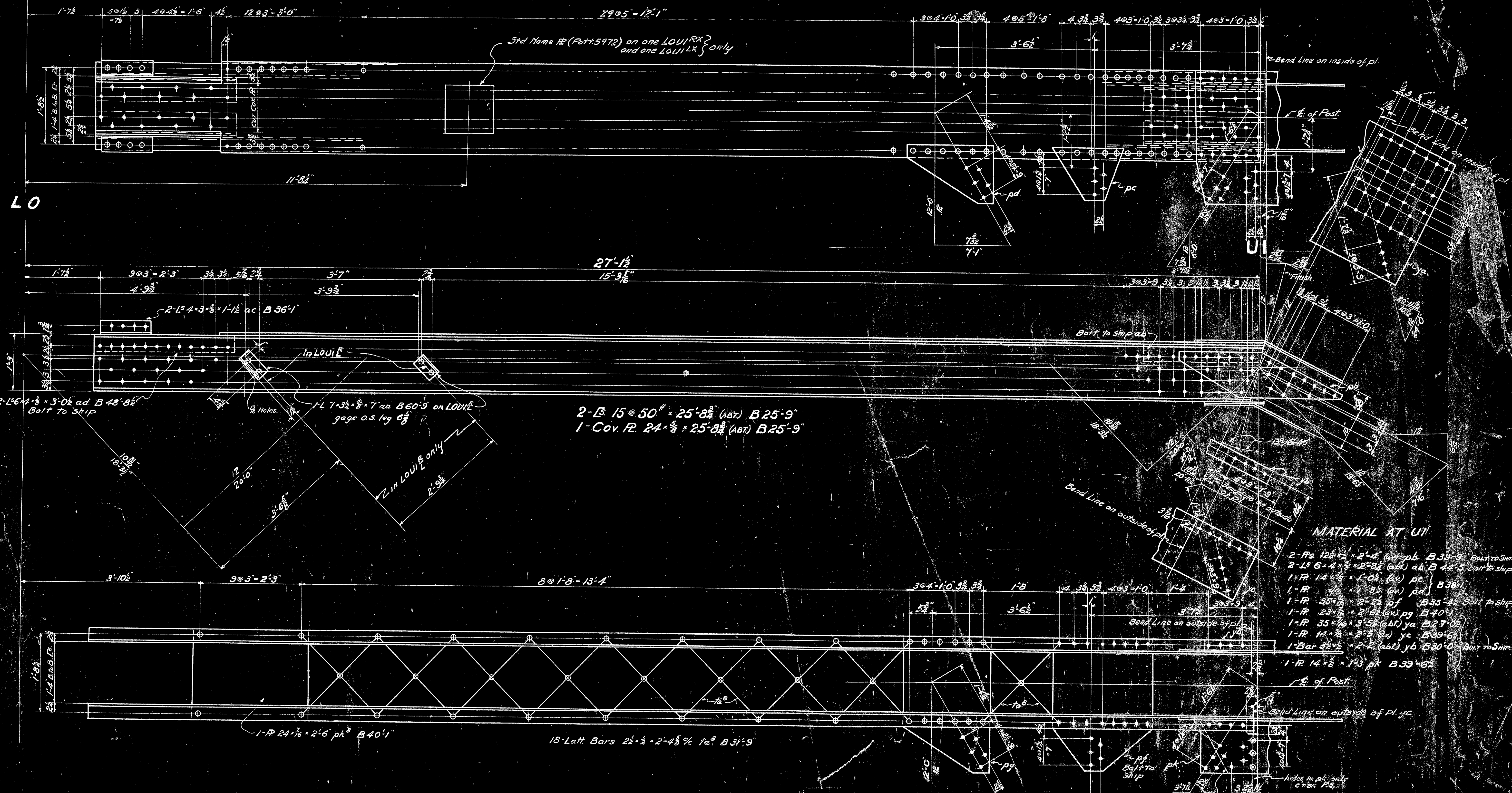


4 BOTTOM CHORDS REQ'D L4L6<sup>R</sup> RIGHT AS SHOWN.  
 4 " " " L4L6<sup>LX</sup> LEFT OF L4L6<sup>R</sup> EXCEPT HOLES AS NOTED AT L4, L5, L6  
 4 " " " L4L5<sup>R</sup> RIGHT AS SHOWN & NOTED.  
 4 " " " L4L5<sup>LX</sup> LEFT OF L4L5<sup>R</sup> EXCEPT HOLES AS NOTED AT L4, L5

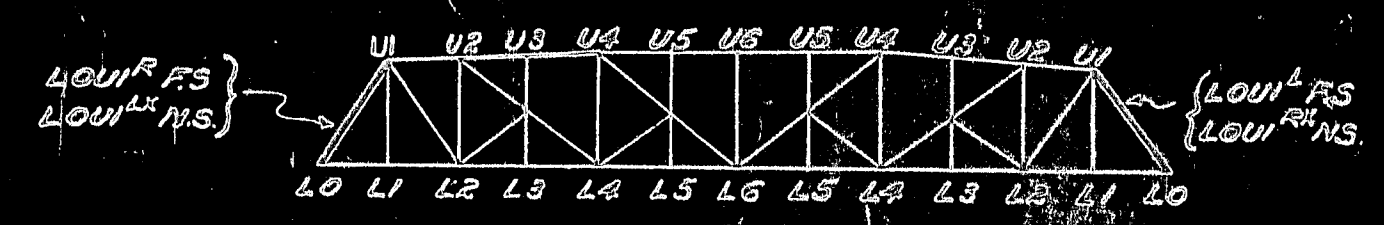
SPECIAL END FOR L4L5<sup>R</sup>

RIVETS $\frac{5}{8}$ " HOLES $\frac{5}{8}$ " Punch holes $\frac{1}{8}$ " & ream to $\frac{1}{8}$ " except in L <sup>2</sup> aa, ab, ps, pf & pg pg which punch $\frac{1}{8}$ " Ream all open holes to an iron template except in L <sup>1</sup> lateral ps ps & pf holes per L <sup>1</sup> & L <sup>2</sup>	NOTES Paint: See Drg #1.	REVISED LAST ASSEMBLY MARKS ab pf	CUSTOMER STATE OF MAINE - DOM. OF CANADA. NAME OF STRUCTURE INTERNATIONAL BRIDGE OVER THE St. JOHN RIVER LOCATION RIVER between MADAWASKA, ME. & EDMUNDSTON, NB TITLE OF DRAWING BOTTOM CHORDS L4L6 <sup>R</sup> & L4L5 <sup>R</sup> THE CANADIAN BRIDGE CO., LIMITED WALKERVILLE, ONT. SCALE 1" = 4'-0" MADE BY R.M. STARTED June 23-21 COMPLETED June 24-21 CHECKED BY R.M. DATE Aug 2 1911 APPROVED BY R.M. DATE Aug 2 1911 CONT. NO. 2411 Dwg. No. 7
---	-----------------------------	--	---



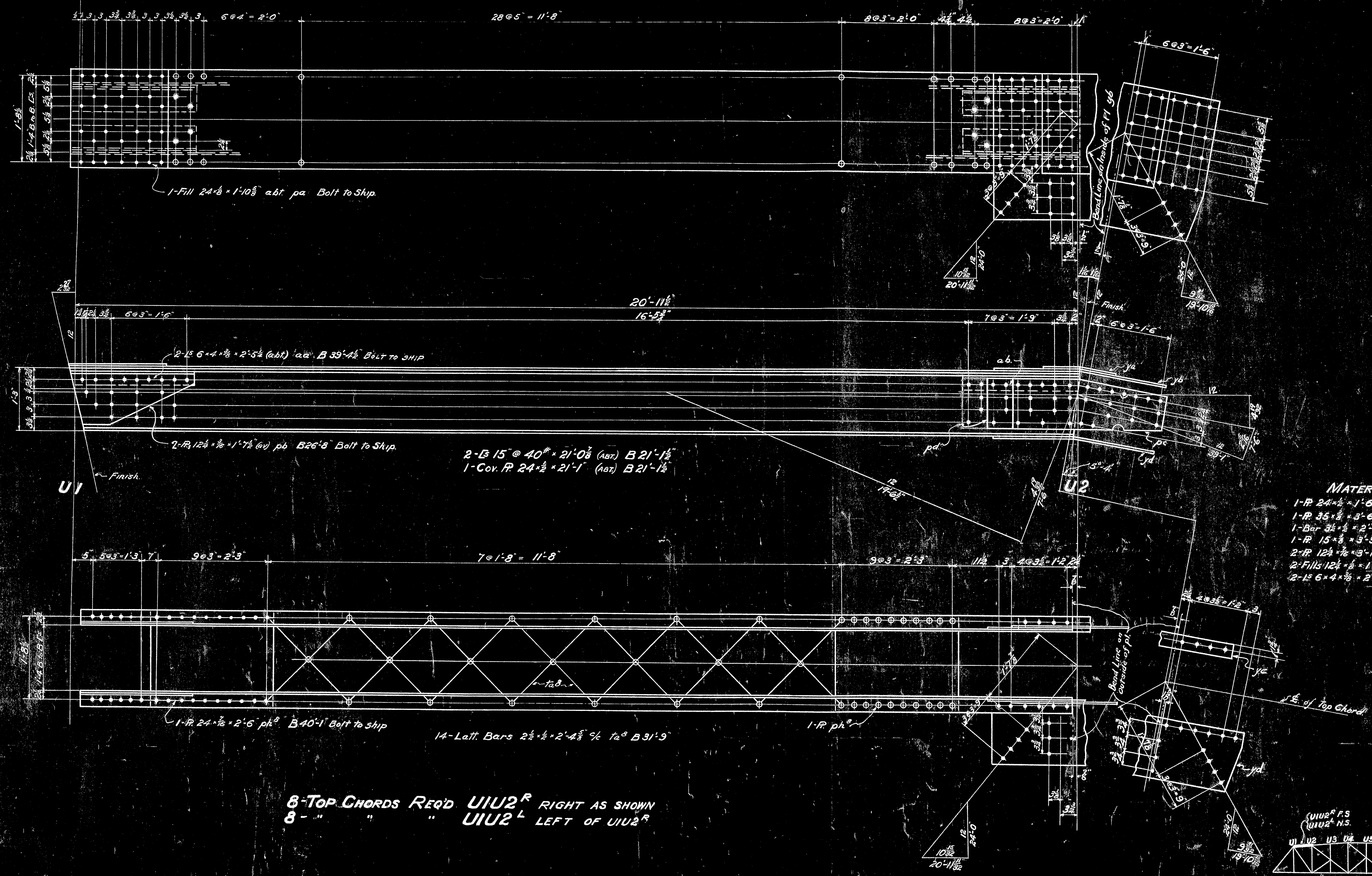


4 END POSTS REQ'D LOUI<sup>R</sup> RIGHT AS SHOWN  
 4 " " " LOUI<sup>L</sup> LEFT OF LOUI<sup>R</sup>  
 4 " " " LOUI<sup>RX</sup> RIGHT AS SHOWN } SAME AS LOUI<sup>L</sup>  
 4 " " " LOUI<sup>LX</sup> LEFT OF LOUI<sup>RX</sup> } EXCEPT L<sub>66</sub>



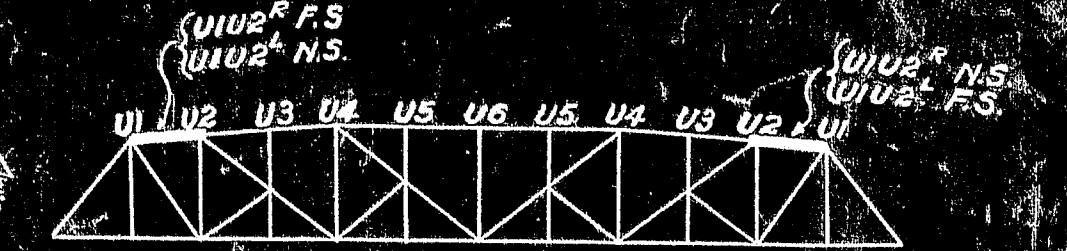
NOTES		REVISED	
RIVETS 7/8"		CUSTOMER STATE OF MAINE - DOM OF CANADA	
HOLES 1/8" except as noted		NAME OF STRUCTURE INTERNATIONAL BRIDGE OVER THE ST. JOHN	
Punch holes 1/8" & room to 1/8"		LOCATION RIVER BETWEEN MADAWASKA ME & EDMUNDSTOWN	
except in 1/8" & 1/4" parts		TITLE OF DRAWING END POST LOUI <sup>R</sup> LOUI <sup>L</sup>	
except in 1/8" & 1/4" parts		THE CANADIAN BRIDGE CO., LIMITED	
except in 1/8" & 1/4" parts		WALKERVILLE, ONT.	
except in 1/8" & 1/4" parts		SCALE 1" = 10'	
except in 1/8" & 1/4" parts		DRAWN BY R. H. ...	
except in 1/8" & 1/4" parts		CHECKED BY ...	
except in 1/8" & 1/4" parts		APPROVED BY ...	
except in 1/8" & 1/4" parts		DATE ...	





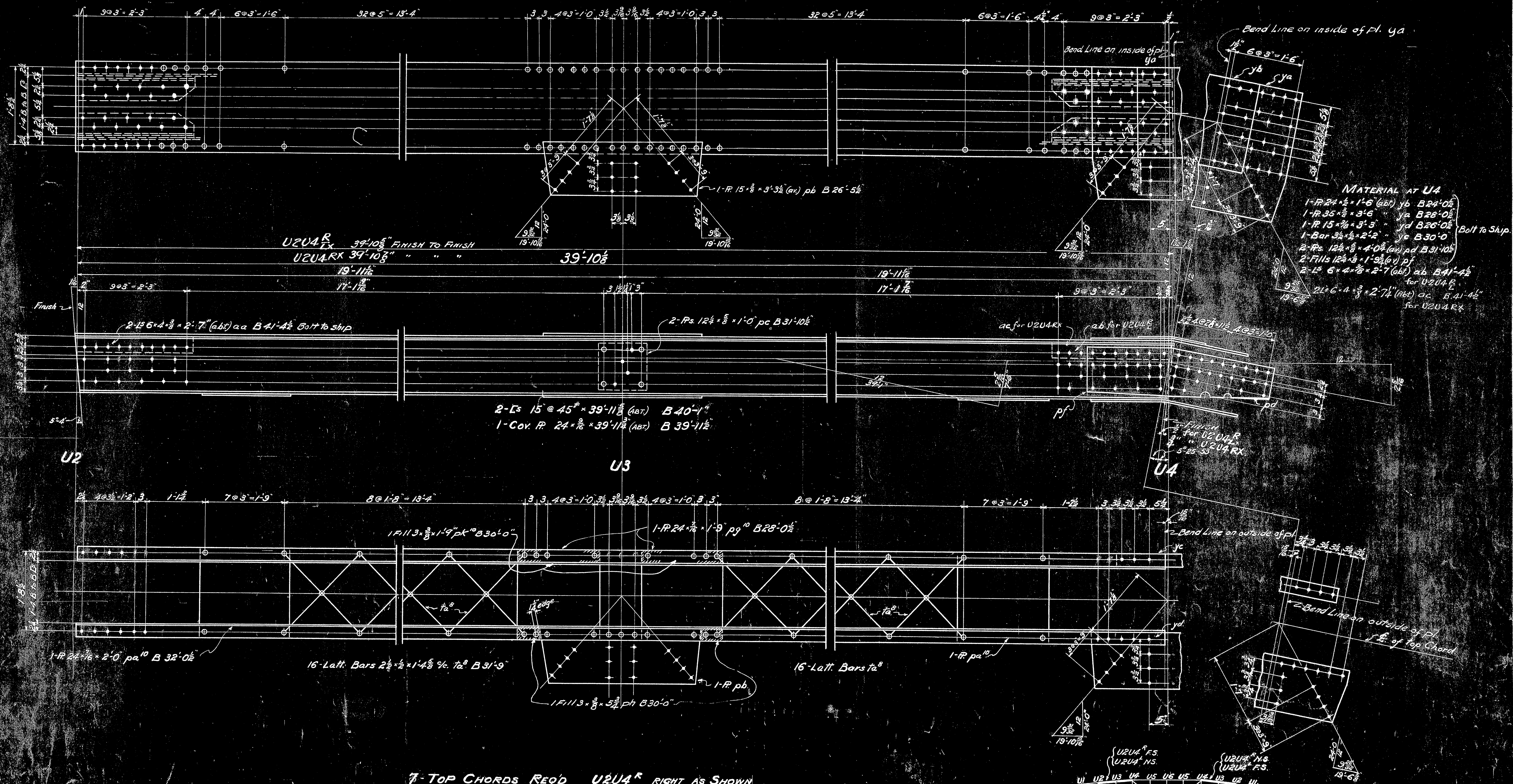
8-Top Chords Req'd UIU2<sup>R</sup> RIGHT AS SHOWN  
 8- " " UIU2<sup>L</sup> LEFT OF UIU2<sup>R</sup>

- MATERIAL AT U2**
- 1-R 24x6x1/8 (a.b.t.) ya B 24-0
  - 1-R 35x8x3/8 ya B 28-0
  - 1-Bar 3/4x3/4x2-2 1/2 ya B 30-0
  - 1-R 15x3/4x3/4 ya B 26-0
  - 2-R 12x3/4x3/4 (av) pc B 25-0
  - 2-Fills 12x3/4x1-10 (av) pd
  - 2-15 6x4x3/4 (a.b.t.) a.b. B 38-0 Bolt to ship



RIVETS $\frac{3}{8}$ " HOLES $\frac{15}{16}$ " Punch holes $\frac{1}{8}$ " ream to $\frac{1}{8}$ " except holes which connect to laterals & struts in ya & yc 60% Tr R's ph <sup>o</sup> which punch $\frac{1}{8}$ " Ream all open holes $\frac{1}{8}$ " then template except bracing connections in ya & yc PAINT: See Drg 7.	NOTES 1-R ph <sup>o</sup>	REVISED LAST ASSEMBLY MARKED ya. pd. ab.	CUSTOMER <b>STATE OF MAINE - DOM. OF CANADA.</b> NAME OF STRUCTURE <b>INTERNATIONAL BRIDGE OVER THE ST. JOHN RIVER</b> LOCATION <b>RIVER BETWEEN MADAWASKA ME. &amp; EDMUNDSTOWN N.S.</b> TITLE OF DRAWING <b>TOP CHORD UIU2<sup>R</sup></b> <b>THE CANADIAN BRIDGE CO., LIMITED</b> WALKERVILLE, ONT. SCALE: <b>1" = 1'-0"</b> MADE BY <b>W.B.M.</b> CHARTED <b>1907</b> 245 COMPLETED <b>1907</b> 25-2 CHECKED BY <b>C.M.T.</b> <b>Aug. 13/07</b> <b>Aug. 13/07</b> CONT. NO. <b>2411</b> APPROVED BY <b>R.R.</b> DATE <b>Aug. 13/07</b> DES. NO. <b>9</b>
---	------------------------------	---	---





**MATERIAL AT U4**

- 1-R 24 x 3/4 x 1'-6" (abt) yb B24'0"
- 1-R 35 x 3/4 x 3'-6" ya B28'0"
- 1-R 15 x 3/4 x 3'-3" yd B26'0"
- 1-Bar 3 1/2 x 1/2 x 2'-2" yc B30'0"
- 2-Rs 12 1/2 x 3/4 x 1'-0" pc B31'10"
- 2-Fills 12 1/2 x 3/4 x 1'-0" pf
- 2-Ls 5 x 4 x 2'-7" (abt) ab B41'4"
- 2-Ls 5 x 4 x 2'-7" (abt) ac B41'4"

Bolt to Ship.

7-TOP CHORDS REQ'D U2U4<sup>R</sup> RIGHT AS SHOWN  
 8- " " " U2U4<sup>L</sup> LEFT OF U2U4<sup>R</sup>  
 1- " " " U2U4<sup>RX</sup> Same as U2U4<sup>R</sup> except Finished Length.

NOTES		REVISED	
RIVETS 3/8" HOLES 1/2" Punch holes 1/2" & ream to 5/8" except Bracing Conn. to Rs ya yd & ps pa pg ph pt pb and Latt. Bars which punch 5/8" Ream all open holes to an Iron template except bracing conn. in Rs ya yb PAINT- See Dwg. #1		LAST ASSEMBLY BRIDGE AC PA YD	
CUSTOMER STATE OF MAINE-DOM. OF CANADA NAME OF STRUCTURE INTERNATIONAL BRIDGE over the St. John LOCATION RIVER between MADAWASKA ME & EDMUNSTON N.B. TITLE OF DRAWING TOP CHORDS U2U4 <sup>R</sup> THE CANADIAN BRIDGE CO., LIMITED WALKERVILLE, ONT.		SCALE 1"=10' MADE BY R.W. STANLEY CHECKER BY C.W. B. WILSON APPROVED BY DES. NO. 2411 Dwg. No. 10	





NOTES	REVISED	CUSTOMER	DATE
RIVETS $\frac{3}{8}$		STATE OF MAINE - DOM. & CANADA	
HOLES $\frac{1}{8}$		NAME OF STRUCTURE	
Punch holes $\frac{3}{8}$ round to $\frac{1}{2}$		INTERNATIONAL BRIDGE over the St. John	
except the pils. pa. $\frac{1}{8}$ ho		LOCATION	
Lat. R. pa. = holes for Lat.		RIVER in town MADAWASKA ME. & EDWINSTON ME	
Strut, conn. in Pz. dim. pg		TITLE OF DRAWING	
stiff beam which punch is		TOP CHORD UAU6 <sup>R</sup>	
Room all open truss for an	LAST Assembly	THE CANADIAN BRIDGE CO., LIMITED	
Iron truss for except the Pz	Makers	WALKERVILLE, ONT.	
to bracing Corals	DATE	SCALE	
Drawn by	DATE	MADE BY	
		CHECKED BY	
		APPROVED BY	
		DATE	